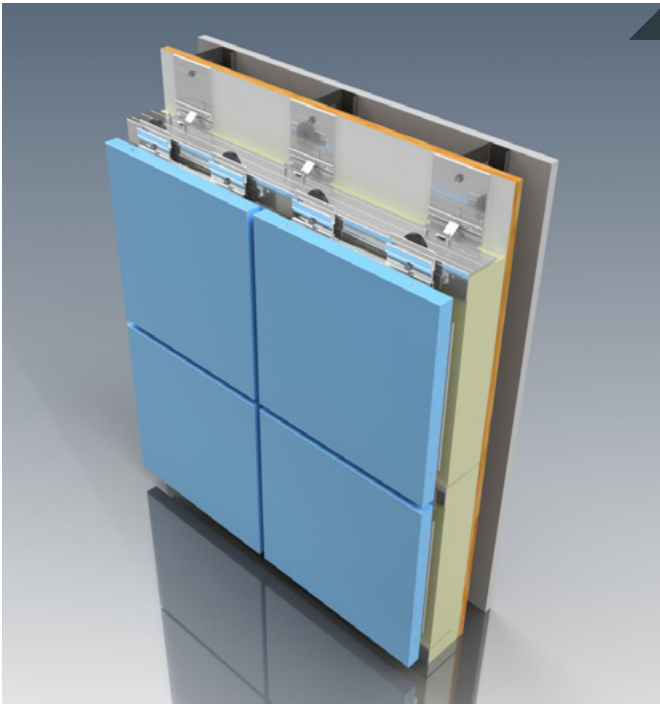


# R4000

## Drained Rear-Ventilated Rainscreen System

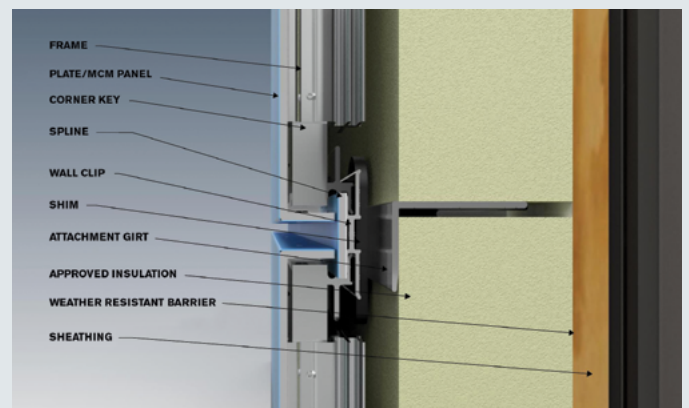


### System Characteristics:

- Joint Width of 1/2 & 3/4"
- Independent Spline Joint
- Most economical Rainscreen System
- Low Maintenance
- Lets the Wall Breathe
- Available With MCM or Aluminum Plate

### Drained Rear-Ventilated Rainscreen System

CEI Materials' Performance Tested & Approved R4000 Drained/ Rear-Ventilated Rainscreen Panel Systems offers rain screen technology with varying joint widths as well as color versatility.



# R4000

## Drained Rear-Ventilated Rainscreen System

### TECHNICAL DETAILS

#### Face Material:

- Alucobond®
- Reynobond®
- ALPOLIC®
- Aluminum Plate Alloy 3030 & 5052

#### System Depth:

1 11/16" minimum, 1 15/16" design

#### Panel Extrusions:

Aluminum Alloy: 6063-T6

Panel Perimeter Extrusion: Semi-Continuous

#### Fabricated Panel Tolerance:

**Length:** Plus 1.6mm (0.062in)

**Width:** Plus 1.6mm (0.062in)

**Depth:** Plus or minus 0.2mm (0.008in)

**Squareness:** 5mm (0.2in) maximum

**Panel Bow:** 0.8 percent maximum of panel length or width

#### Tested Systems & Code Compliance:

At CEI Materials we are dedicated to making sure that our cladding systems meet and exceed all the project specific requirements for performance and adherence to local & International Building Code standards. Depending on the system we will clearly identify what tests and procedures were completed internally and with third party assistance.

**ASTM E 283** - Static Air Infiltration

**ASTM E 330** - Structural Design loads (40psf)

**ASTM E 331** - Static Water Infiltration

**AAMA 501.1** - Dynamic Water Infiltration Test

**AAMA 509** - Drained & Back Ventilated Rainscreen Test

**NFPA 285** - Multi-Story Flame Spread Test

**Florida Product Approval**

#### System Details:

All system details at CEI Materials are available in Autocad & Revit.