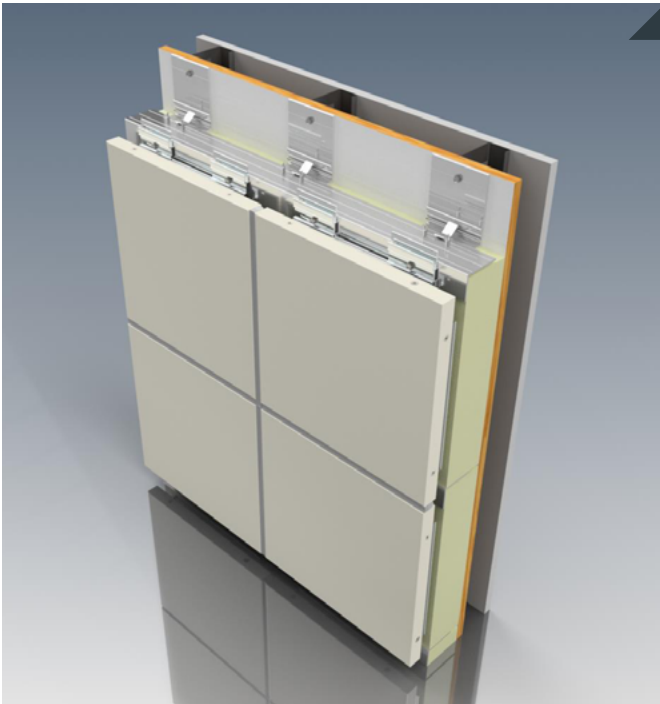


W5000

Route and Return Silicone Joint System

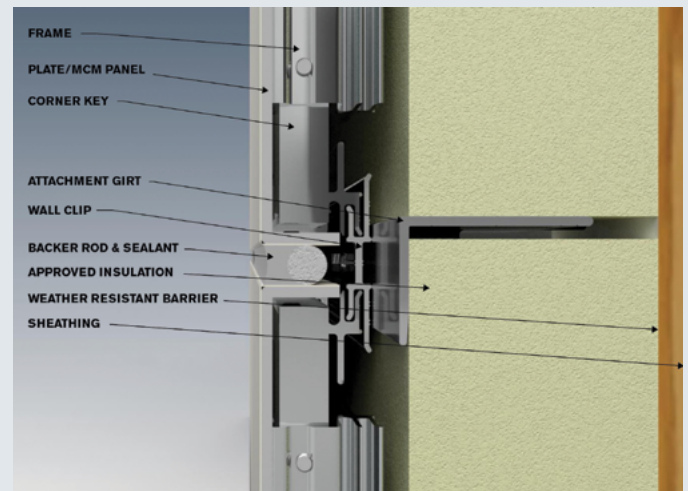


System Characteristics:

- Route & Return Caulked Joint
- Joint Width of 1/2 & 5/8"
- Non Progressive - Individual Removable Panels
- Most Economical System
- Available With MCM or Aluminum Plate

Route & Return Silicone Joint System

CEI Materials' W5000 Route & Return Silicone Joint Panel Systems offer a weather tight economical assembly utilizing a closed cell backer rod, structural silicone joint and hidden fasteners. The non-progressive design offers installation versatility.



W5000

Route and Return Silicone Joint System

TECHNICAL DETAILS

Face Material:

- Alucobond®
- Reynobond®
- ALPOLIC®
- Aluminum Plate Alloy 3030 & 5052

System Depth:

1 11/16" minimum, 1 15/16" design

Panel Extrusions:

Aluminum Alloy: 6063-T6
Panel Perimeter Extrusion: Semi-Continuous

Fabricated Panel Tolerance:

Length: Plus 1.6mm (0.062in)
Width: Plus 1.6mm (0.062in)
Depth: Plus or minus 0.2mm (0.008in)
Squareness: 5mm (0.2in) maximum
Panel Bow: 0.8 percent maximum of panel length or width

Tested Systems & Code Compliance:

At CEI Materials we are dedicated to making sure that our cladding systems meet and exceed all the project specific requirements for performance and adherence to local & International Building Code standards. Depending on the system we will clearly identify what tests and procedures were completed internally and with third party assistance.

ASTM E 283 - Static Air Infiltration

ASTM E 330 - Structural Design loads (40psf)

ASTM E 331 - Static Water Infiltration

NFPA 285 - Multi-Story Flame Spread Test

Florida Product Approval

System Details:

All system details at CEI Materials are available in Autocad & Revit.