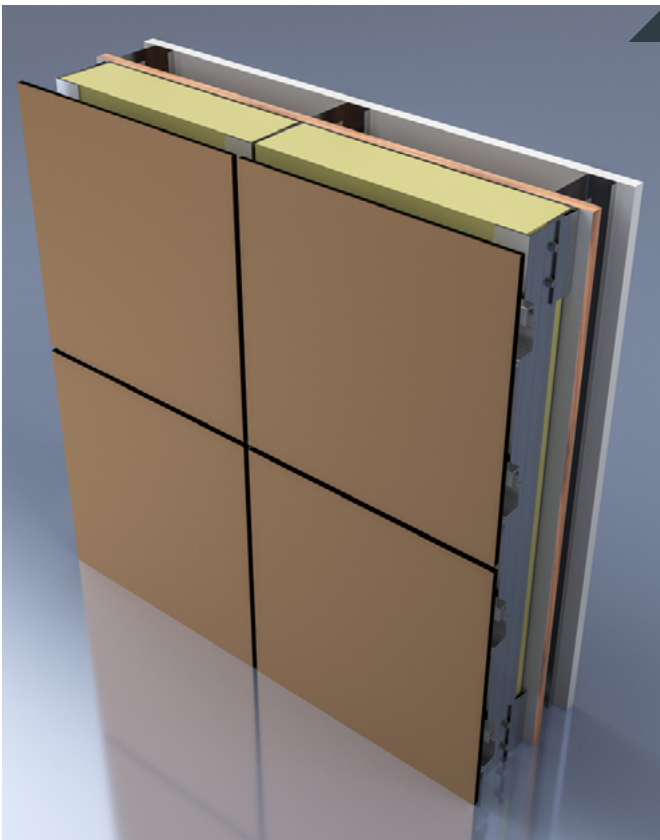


C2000

Concealed Fastener Attachment System

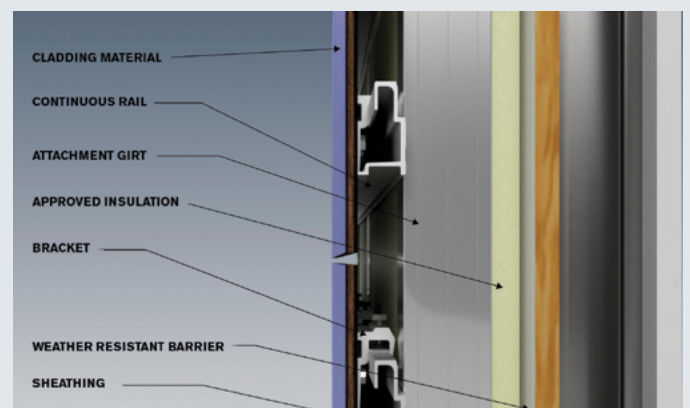


System Characteristics:

- Drained Back Ventilated Rainscreen
- The back of each panel is pre-drilled to receive the hanger clip and anchor.
- Low Maintenance
- Mill Finish or Black Anodized Rail

Concealed Fastener Attachment System

CEI Materials C2000 Concealed Fastener Attachment Systems offers installation flexibility by using a concealed adjustable bracket for a smooth finish with precision joints.



C2000

Concealed Fastener Attachment System

TECHNICAL DETAILS

Face Material:

- HPL
-

System Depth:

- HPL: 1^{5/16}"
-

Panel Extrusions:

Aluminum Alloy: 6063-T6

Fabricated Panel Tolerance:

Length: Plus 1.6mm (0.062in)

Width: Plus 1.6mm (0.062in)

Depth: Plus or minus 0.2mm (0.008in)

Squareness: 5mm (0.2in) maximum

Panel Bow: 0.8 percent maximum of panel length or width

Tested Systems & Code Compliance:

At CEI Materials we are dedicated to making sure that our cladding systems meet and exceed all the project specific requirements for performance and adherence to local & International Building Code standards. Depending on the system we will clearly identify what tests and procedures were completed internally and with third party assistance.

ASTM E 283 - Static Air Infiltration

ASTM E 330 - Structural Design loads (40psf)

ASTM E 331 - Static Water Infiltration

AAMA 501.1 - Dynamic Water Infiltration Test

AAMA 509 - Drained & Back Ventilated Rainscreen Test

NFPA 285 - Multi-Story Flame Spread Test

Florida Product Approval

System Details:

All system details at CEI Materials are available in Autocad & Revit.