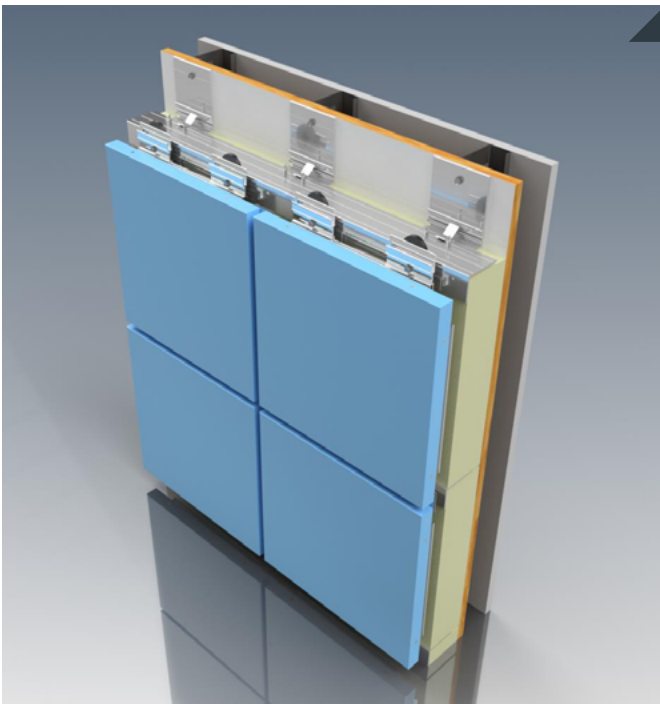


R4000

Drained Rear-Ventilated Rainscreen System

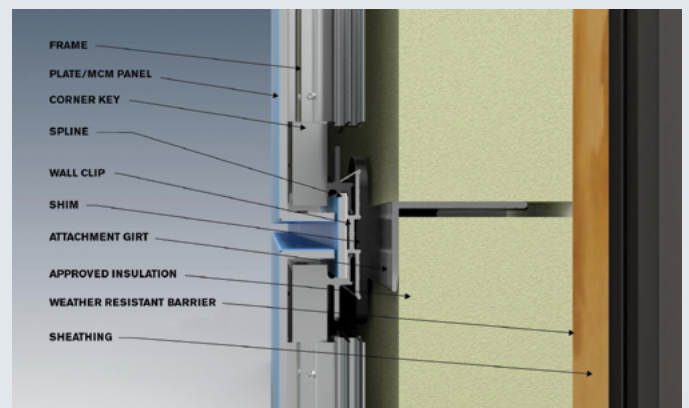


System Characteristics:

- Joint Width of 1/2 & 3/4"
- Independent Spline Joint
- Most economical Rainscreen System
- Low Maintenance
- Lets the Wall Breathe
- Available With MCM or Aluminum Plate

Drained Rear-Ventilated Rainscreen System

CEI Materials' Performance Tested & Approved R4000 Drained/ Rear-Ventilated Rainscreen Panel Systems offers rain screen technology with varying joint widths as well as color versatility.



R4000

Drained Rear-Ventilated Rainscreen System

TECHNICAL DETAILS

Face Material:

- Alucobond®
- Reynobond®
- ALPOLIC®
- Vitrabond®
- Aluminum Plate Alloy 3030 & 5052

System Depth:

1 11/16" minimum, 1 15/16" design

Panel Extrusions:

Aluminum Alloy: 6063-T6
Panel Perimeter Extrusion: Semi-Continuous

Fabricated Panel Tolerance:

Length: Plus 1mm (0.0394")
Width: Plus 1mm (0.0394")
Depth: Plus or minus 0.2mm (0.008")
Squareness: .5mm (0.016") maximum

Tested Systems & Code Compliance:

At CEI Materials we are dedicated to making sure that our cladding systems meet and exceed all the project specific requirements for performance and adherence to local & International Building Code standards. Depending on the system we will clearly identify what tests and procedures were completed internally and with third party assistance.

ASTM E 283 - Static Air Infiltration

ASTM E 330 - Structural Design loads (40psf)

ASTM E 331 - Static Water Infiltration

AAMA 501.1 - Dynamic Water Infiltration Test

AAMA 509 - Drained & Back Ventilated Rainscreen Test

NFPA 285 - Multi-Story Flame Spread Test

Florida Product Approval

System Details:

All system details at CEI Materials are available in Autocad & Revit.